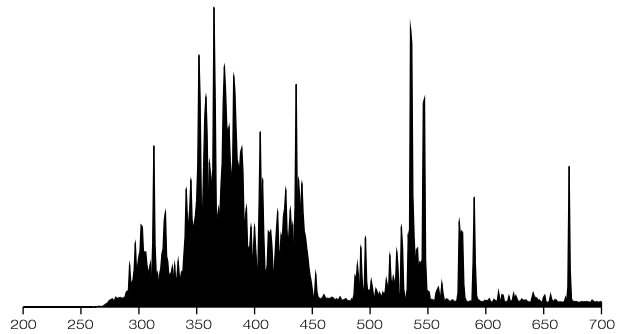


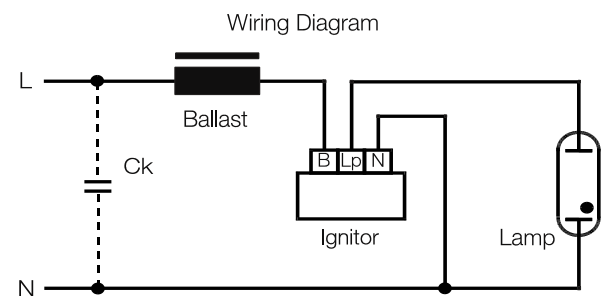
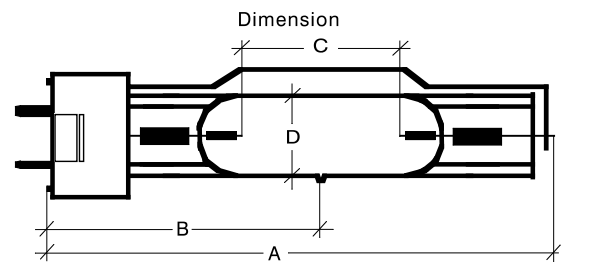


**Cosmedico**  
**ME 650 GY9.5**  
**Metal halide lamp for**  
**sun tanning equipment**

Typical Relative Spectral Radiant Flux



Article-No.	21112
FDA-ACC. No:	
Total length (A)	128 mm
Face to discharge center (B)	60 mm
Lighted length (C)	45 mm
Bulb diameter (D)	Ø 16 mm
Ceramic base	GY9.5
Bulb (quartz glass)	FDA
Lamp voltage $U_{Lp.}$	140 V
Current $I_{Lp.}$	4,5 A
Lamp wattage $P_{Lp.}$	580 VA
Supply voltage	230 V 50 Hz
Starting voltage	3-4,5 kV
Intial phase	3 min.



We recommended the ignitor Cosmopower S Z 1000 (#71813) and the parallel connection from the ballasts Cosmopower S 500W (#74428/50Hz) and Cosmopower S 100W (#74245).

The useful life is determined on the operation condition of the lamp (for example type of ballast / ignitor used, on / off cycle, cooling conditions, etc.). We recommend to change the lamps if the reduction of intensity is down to 75% of its original output.

To avoid failure of the lamps they have to be operated with adequate cooling. If the following operating temperatures are exceeded, the lamp may be destroyed:

- bulb temperature  $\leq 950\text{ }^{\circ}\text{C}$  and  $\geq 750\text{ }^{\circ}\text{C}$
- seal temperature  $\leq 350\text{ }^{\circ}\text{C}$

Remove contaminations (e.g. finger-prints) with 100% alcohol!

**Please note!**

Follow sunlamp equipment manufactures instructions. Tubular metal halide lamps emit a very intensive UV-radiation. Filter and safety glasses must be used as eyes and skin may be damaged within seconds otherwise.